



INSTALLATION INSTRUCTIONS & PLUMBING GUIDELINES



Made in Australia for Australian Conditions!

Thank you for purchasing a quality Gough tank. In order to gain the maximum benefit from your purchase, we have outlined the following instructions for the installation and set-up of your Gough tank.

Please read all these instructions carefully before installing your tank. Failure to follow these instructions will result in the voiding of the warranty.

Delivery

Delivery to site is subject to the terms and conditions of Toll NQX and other carriers.

If no-one is available to sign for the delivery or if the road to the delivery point is unsuitable, the driver will decide to either deliver to the closest point achievable or return to the depot and the tank will be available for collection from the depot.

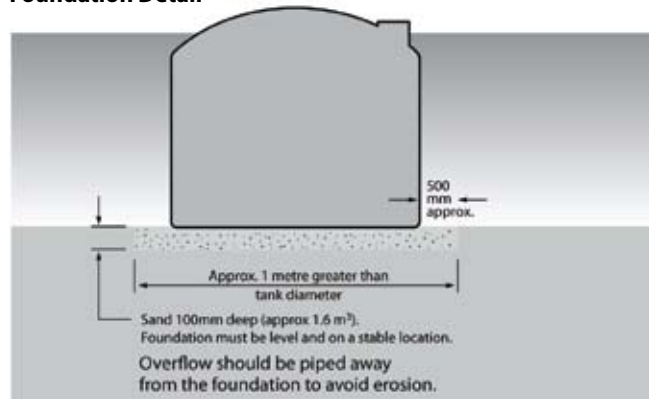
Installation is the risk and responsibility of the purchaser.

Foundation

A level, compacted earth foundation is required with 100mm deep sand, approximately 1 metre greater than the tank diameter and most importantly, free from any sharp objects or projections (see illustration).

When locating into a sloping site, extra care should be taken to prevent any erosion of the foundation. Although site preparation is minimal, we advise it to be done properly.

Foundation Detail



When installing Gough tanks, choose a firm and level area and most importantly, free from any sharp projections. Elevated platforms must have floor with gaps no greater than 25 mm and preferably would be solid. It must be strong enough to withstand wind loads in conjunction with the weight of a full tank, which equates to approximately one Kilogram per Litre plus the tank weight. When installing on a concrete slab, place 25mm of fine bedding sand between the tank and slab to allow the tank to settle.

Care given to correct foundation and installation will greatly benefit the lifespan of the tank and your ongoing satisfaction of our product.

Gough tanks are only designed for above-ground installation and therefore must not be fully or partially buried.

- Do not install water tanks over buried pipes, cables or any other utility connections which may require servicing or maintenance.
- Do not install water tanks over underground structures such as cellars, septic tanks, sewage canals, etc.
- Do not install water tanks where they could pose a potential hazard to life or property.

Plumbing Guidelines

Because polyethylene water tanks expand when full, all plumbing to the tank **MUST** be flexible. All plumbing attached to the tank must be done properly with all connections free from stress. All drilling and plumbing should be completed prior to filling. Failure to follow these instructions voids all warranty.

Base Plumbing

One fitting is supplied from the factory for extra strength. You can determine position at the time of ordering.

The fitting is ready for use, (see Bung Removal Instructions). The fitting is raised to prevent sludge pick-up and to retain some water weight, an added benefit in making the tank more stable in exposed areas.

Care should be taken to support all pipe fittings independently to minimise stress on base plumbing.

It is not recommended to install fittings anywhere else in the tank wall as this will create a stressed point in the tank structure.

If an output fitting is required at a specific level, connect an internal vertical pipe to the desired level from a base mounted outlet, (see Restricted Height Outlet Detail and Flexible Hose Details).

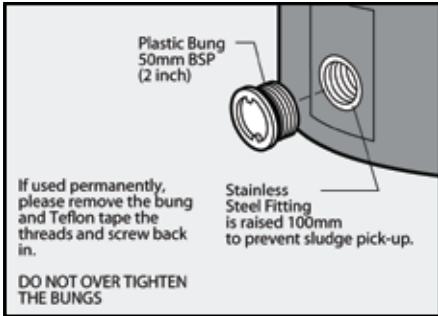
Please use only appropriate fittings and make sure that all joints are well sealed and watertight with no light penetration.

Note: Bungs are screwed-in for transport only! If used permanently, please remove the bung and Teflon tape the threads and screw back in.

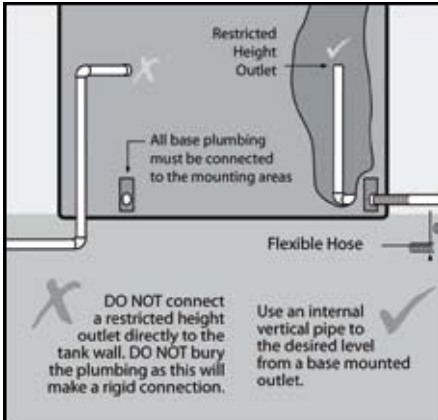
- **DO NOT OVER TIGHTEN** the bungs if they are to be refitted. This procedure must be completed before filling the tank.

All Chemical, Molasses and non-potable water storage tanks have a 1 year warranty.
All potable water storage tanks have a 1 year warranty. For more details, see our warranty form.

PLUMBING GUIDELINES



Base Plumbing & Bung Removal



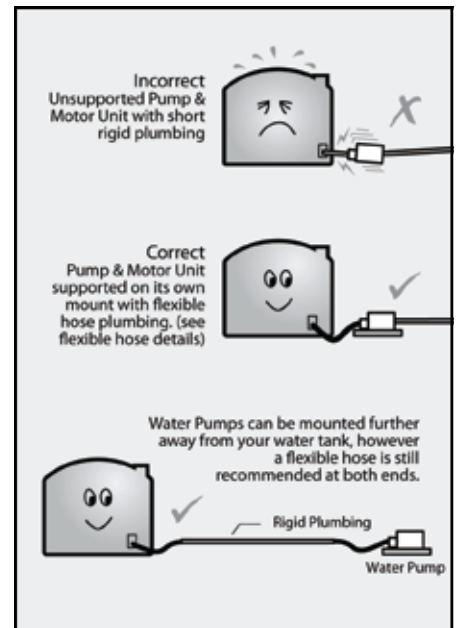
Restricted Height Outlet

Water Pump Installation

DO NOT directly install water pumps to the side of your water tank. The water pump and its motor must be self-supported, on its own mount and connected to the tank via flexible hose to isolate any vibration or movement by the pumping unit itself. The tank outlet areas and their fittings must not be stressed by the weight of the water pump, motor or plumbing (see Water Pump Diagrams and Flexible Hose Diagrams).

Adequate Ventilation

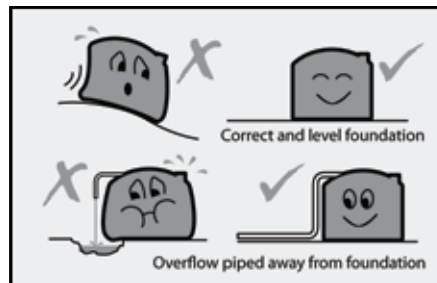
Remember when water pumps are used, allow more than adequate overflow and venting. Air and water must be able to enter or escape the tank at the same rate the water is coming in or out. Failure to follow this will void warranty. Use the top plumbing areas when attaching overflow or vent plumbing to your water tank.



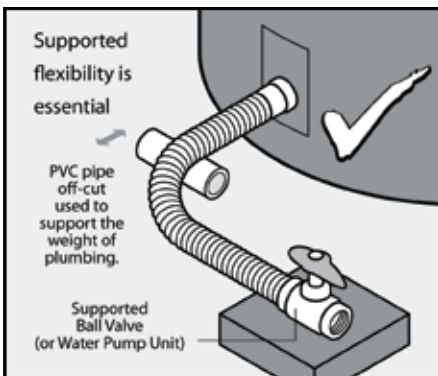
Water Pump Installation and Location

Flexible Hose Base Plumbing

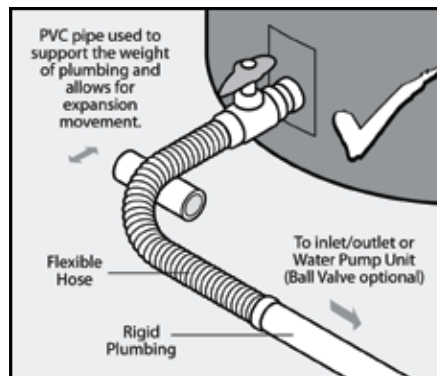
SUPPORTED FLEXIBILITY IS ESSENTIAL on all base mounted plumbing. Because all polyethylene tanks expand when full, direct rigid plumbing connections to the base of your water tank are not suitable. A supported flexible hose between your water tank and rigid plumbing or pump is recommended.



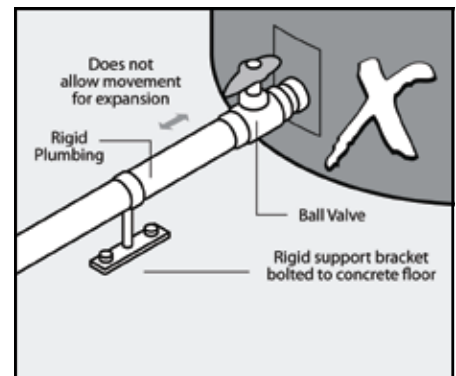
PLUMBING GUIDELINES



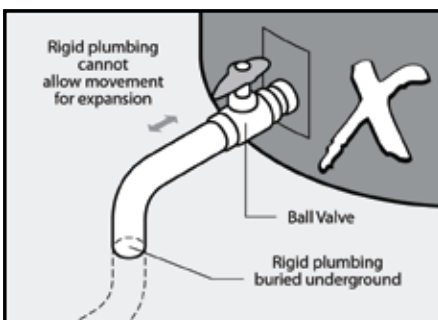
Flexible Hose to Ball Valve



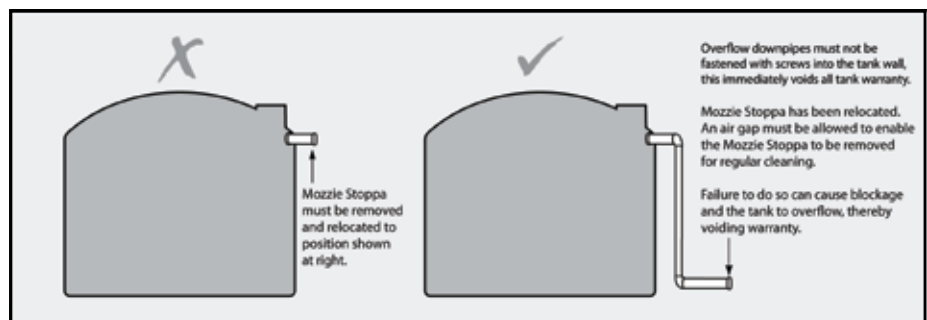
Directly mounted Ball Valve to Flexible Hose



Wrong Installation - Rigid Plumbing - Voids Warranty



Wrong Installation - Buried Plumbing - Voids Warranty



Mozzie Stoppa - Voids Warranty

Thank you for becoming our customer. For any further technical support or more information on other Gough products, please contact:

GOUGH PLASTICS
FREECALL 1800 069 805

www.gough.com.au
PO Box 7570, Garbutt BC, QLD 4814

Technical specifications, instructions and guidelines in this brochure are subject to change without prior notice. Please contact Gough Plastics for the latest update.

Controlled Document
X:\QA\A54766\Sales & Marketing\Installation Instructions & Plumbing Guidelines



ARMA Member