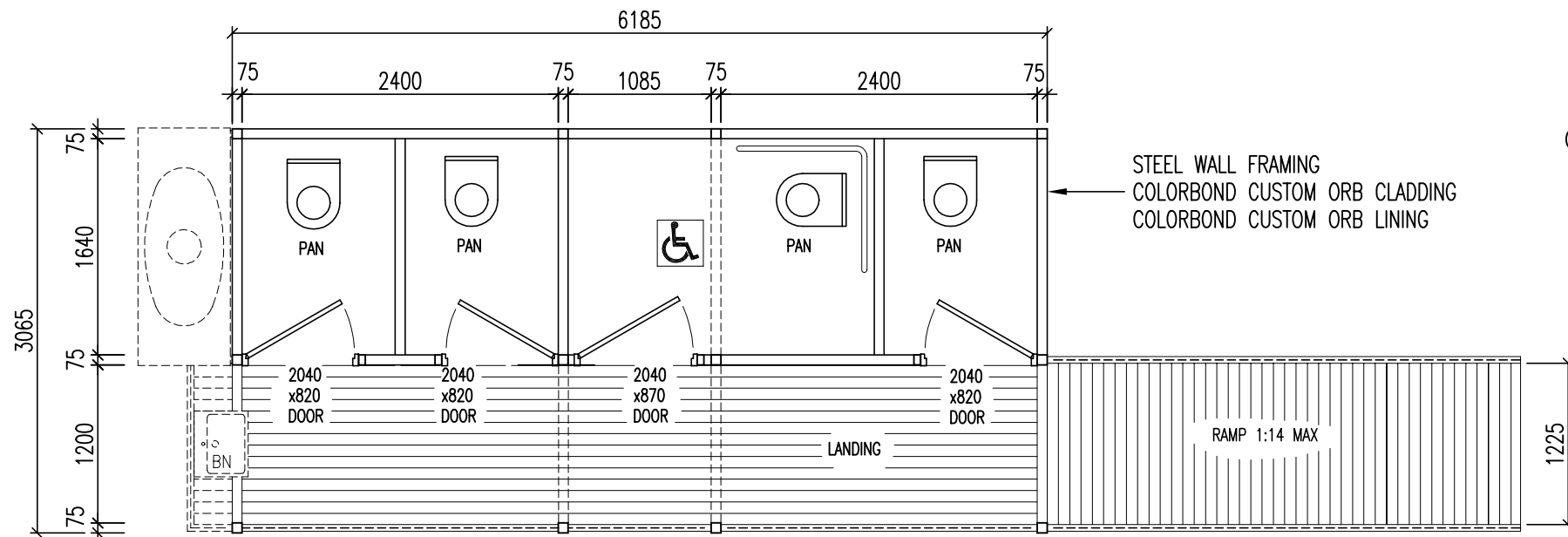
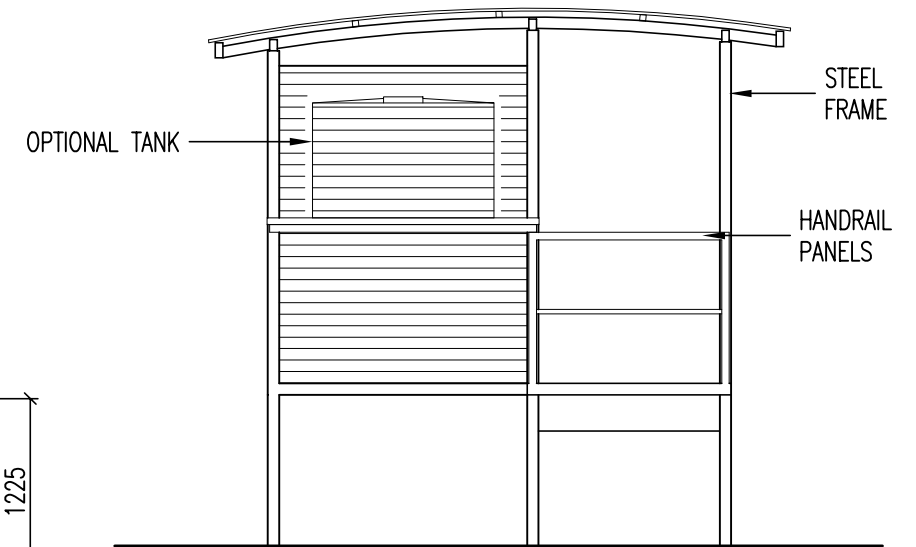


**ELEVATION**  
(1:50)



**PLAN**  
(1:50)



**END VIEW**  
(1:50)

No.	DATE	BY	DESCRIPTION	GOUGH
REVISION				APPROV.



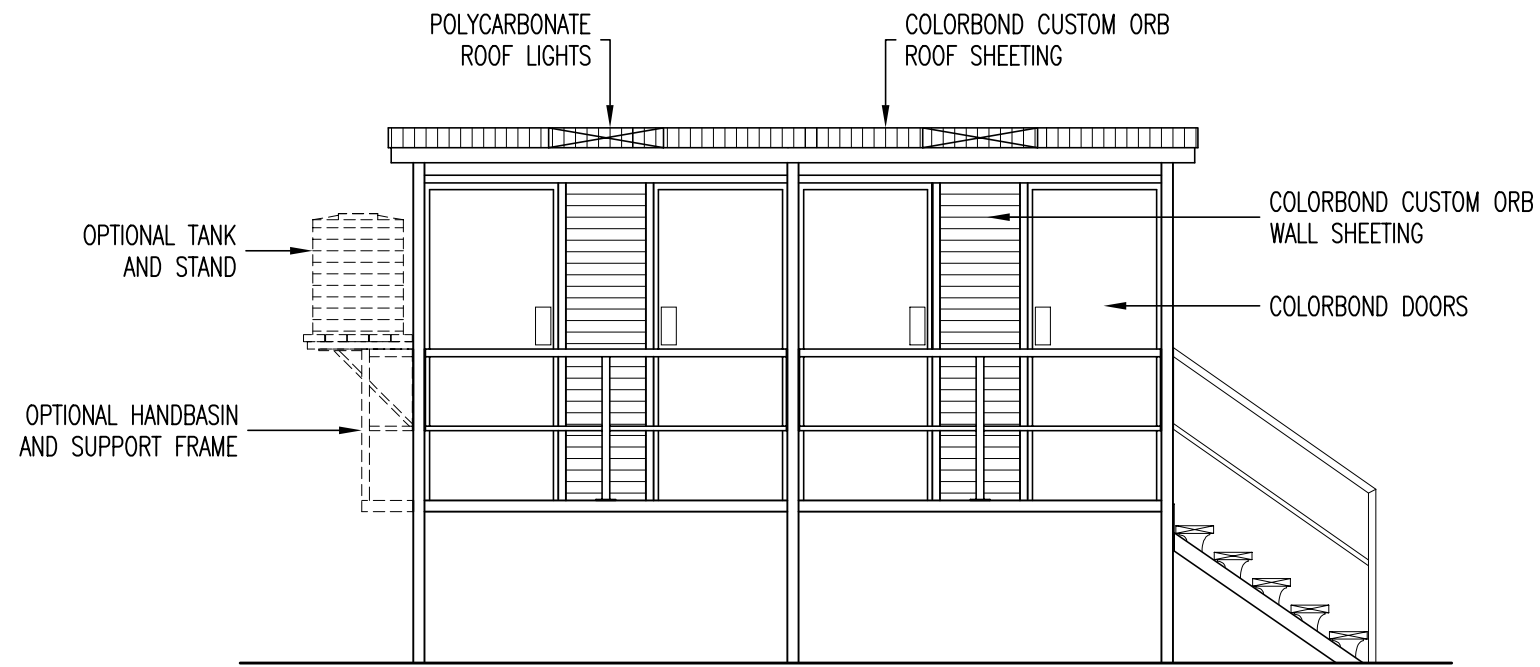
Gough Industries Pty. Ltd.  
833 Ingham Road  
Bohle, Townsville  
P.O. Box 1258, Aitkenvale, Qld. 4814.  
Telephone 07 47747606  
Facsimile 07 47747608  
A.C.N. 010 028 547

This drawing remains the property of Gough Industries Pty. Ltd. It is subject to Gough Industries Pty. Ltd.'s recall and must not be reproduced in part or whole or its contents divulged to third parties without prior written approval from Gough Industries Pty Limited.

	Signature	Date
DRAWN	AGE	21-09-01
DRN. CHK		
ENGINEER		
ENG. CHK		
SUBMITTED FOR APPR.		
Eng. APPROVAL		

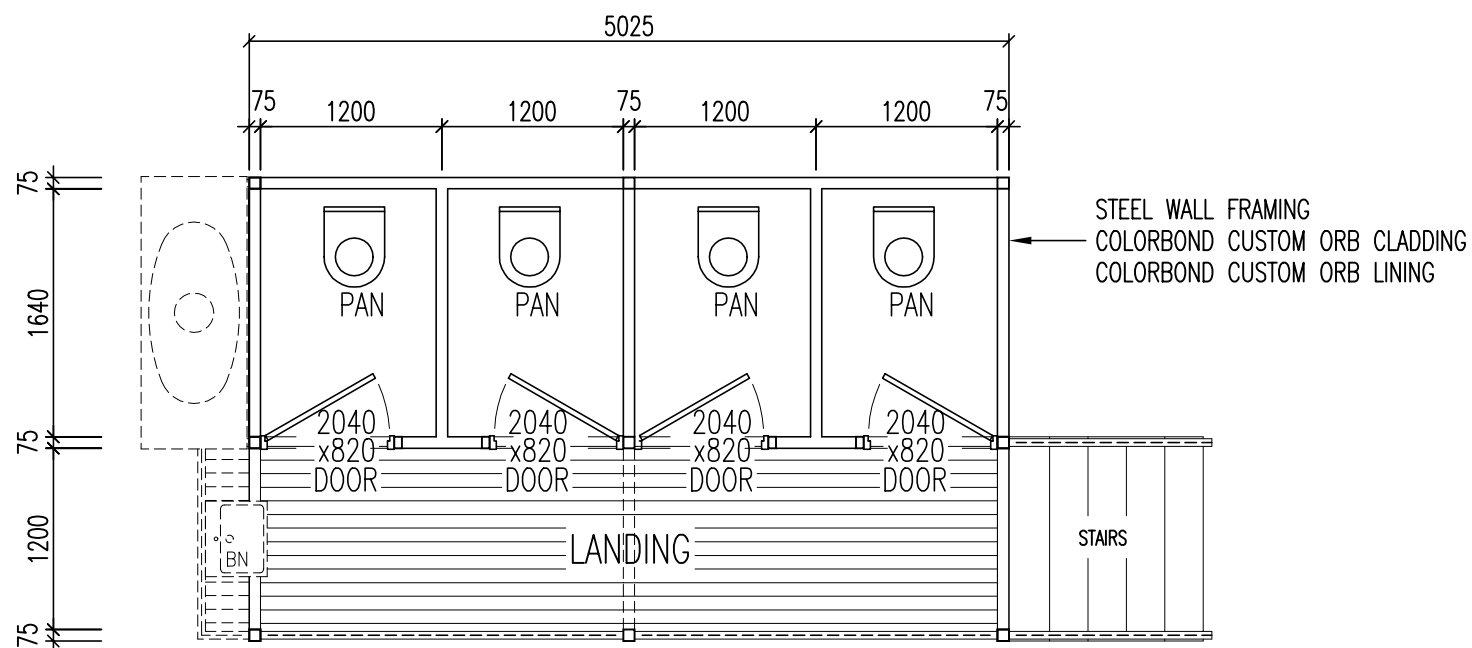
PREFABRICATED AMENITIES BUILDING  
'EASTBROOK' EB-3C1D

SCALE: AS NOTED	A3	Gough Plastics Drg. No. EB-3C1D-101	0	REV
EDIT DATE:	CAD FILE :			



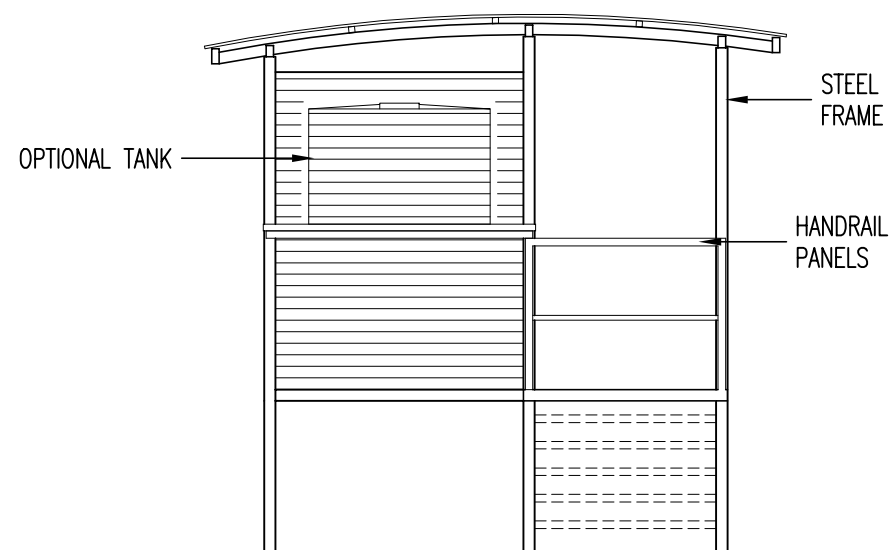
**ELEVATION**

(1:50)



**PLAN**

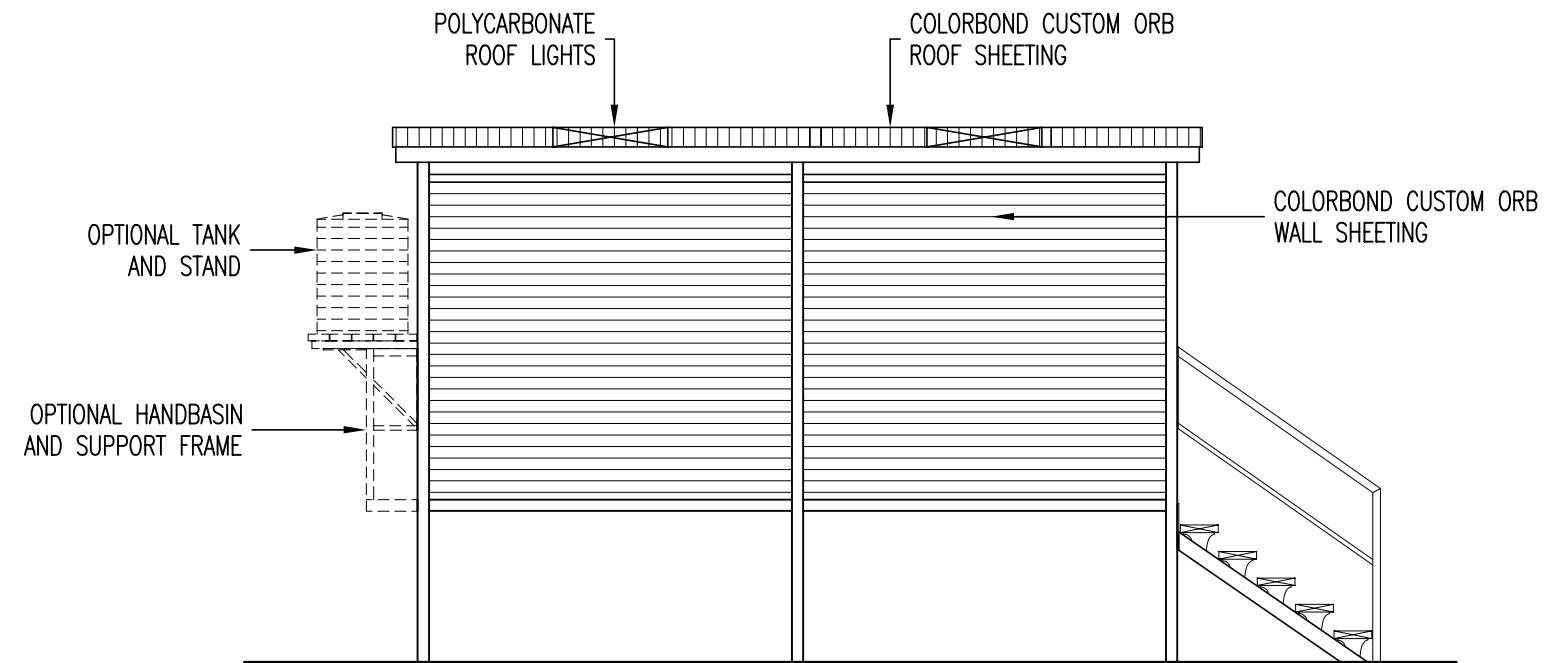
(1:50)



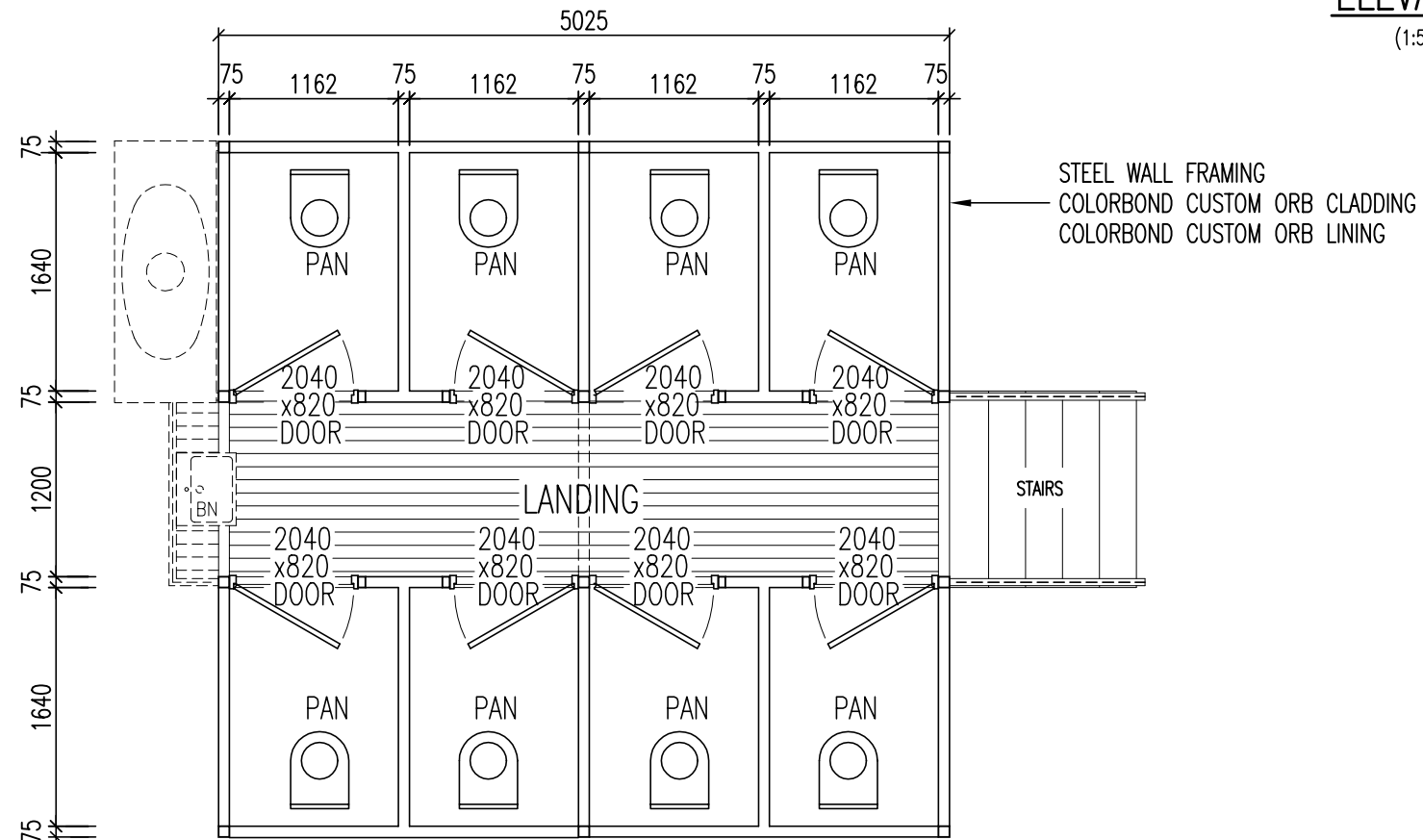
**END VIEW**

(1:50)

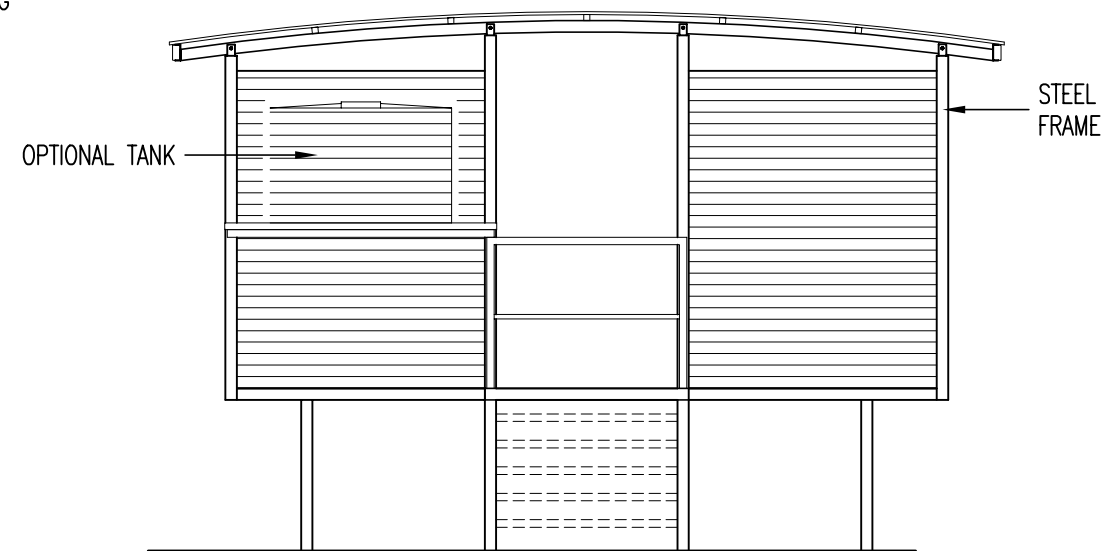
				<p><b>Gough Industries Pty. Ltd.</b> 833 Ingham Road Bohle, Townsville P.O. Box 1258, Aitkenvale, Qld. 4814. Telephone 07 47747606 Facsimile 07 47747608 A.C.N. 010 028 547</p>	Signature	Date	<p align="center"><b>PREFABRICATED AMENITIES BUILDING</b> <b>'EASTBROOK' EB-4C</b></p>			
					AGE	21-09-01				
				<p><b>GOUGH PLASTICS</b> Custom Rotational Moulders</p>	DRWN		<p align="center">Gough Plastics Drg. No. <b>EB-4C-101</b></p>			
					DRN. CHK					
				<p>This drawing remains the property of Gough Industries Pty. Ltd. It is subject to Gough Industries Pty. Ltd.'s recall and must not be reproduced in part or whole or it's contents divulged to third parties without prior written approval from Gough Industries Pty Limited.</p>	ENGINEER		<p>SCALE: AS NOTED</p>	<p>A3</p>	<p>0</p>	<p>REV</p>
					ENG. CHK					
				<p>APPROVAL</p>	SUBMITTED FOR APPR.		<p>EDIT DATE: CAD FILE :</p>			
					Eng. APPROVAL					
No.	DATE	BY	DESCRIPTION	GOUGH						
<b>REVISION</b>				<b>APPROV.</b>						



**ELEVATION**  
(1:50)



**PLAN**  
(1:50)



**END VIEW**  
(1:50)

No.	DATE	BY	DESCRIPTION	GOUGH
REVISION				APPROV.



Gough Industries Pty. Ltd.  
833 Ingham Road  
Bohle, Townsville  
P.O. Box 1258, Aitkenvale, Qld. 4814.  
Telephone 07 47747606  
Facsimile 07 47747608  
A.C.N. 010 028 547

This drawing remains the property of Gough Industries Pty. Ltd. It is subject to Gough Industries Pty. Ltd.'s recall and must not be reproduced in part or whole or its contents divulged to third parties without prior written approval from Gough Industries Pty Limited.

	Signature	Date
DRAWN	AGE	21-09-01
DRN. CHK		
ENGINEER		
ENG. CHK		
SUBMITTED FOR APPR.		
Eng. APPROVAL		

PREFABRICATED AMENITIES BUILDING  
'EASTBROOK' EB-8C

SCALE: AS NOTED	A3	Gough Plastics Drg. No. EB-8C-101	0	REV
EDIT DATE:	CAD FILE :			