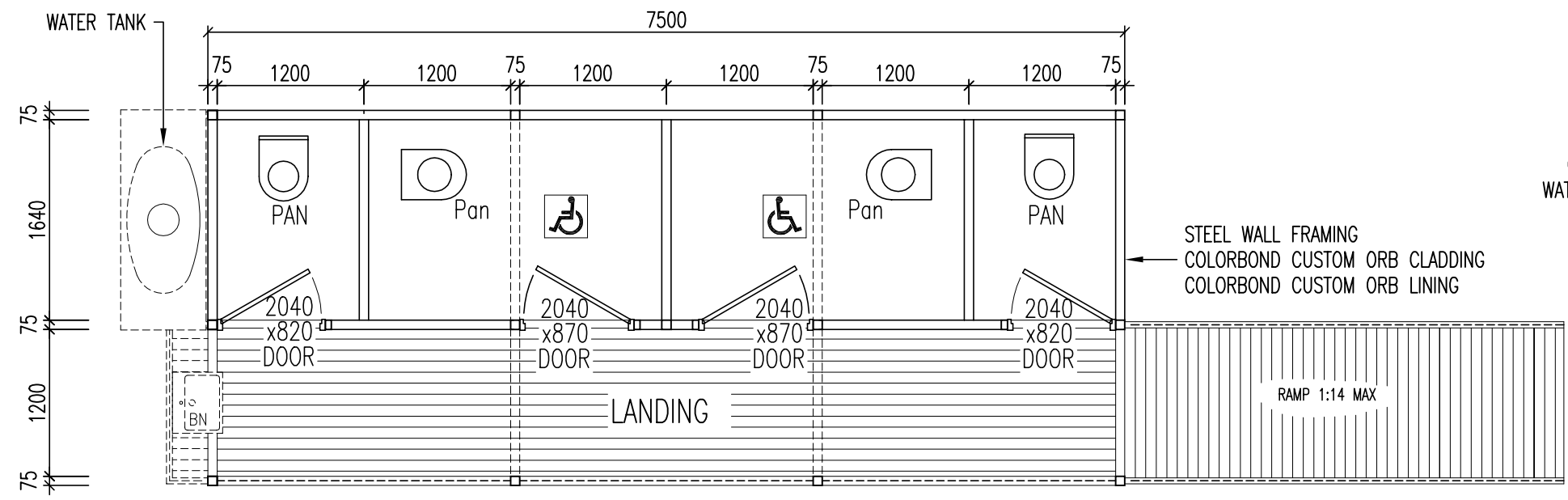
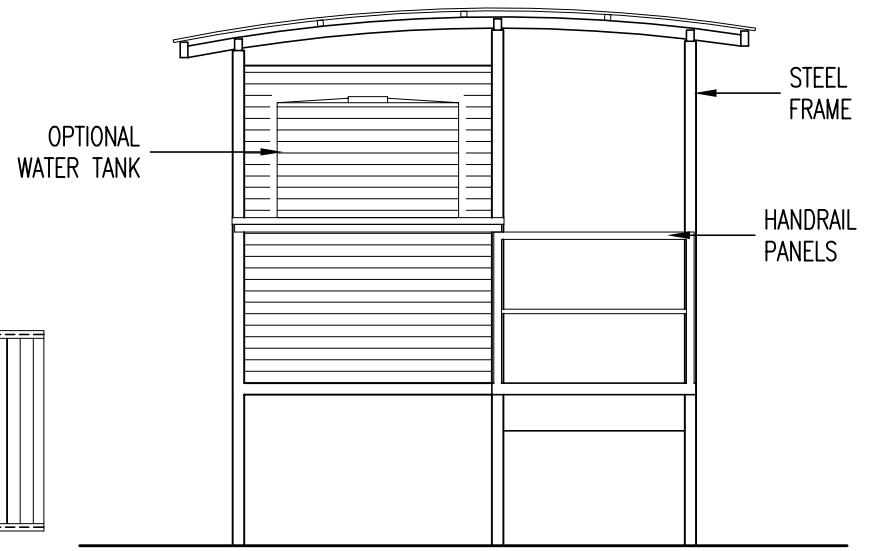



ELEVATION
(1:50)



PLAN
(1:50)



END VIEW
(1:50)

| | | | | | | | | | | | | |
|-----------------|------|----|-------------|---|---|--|--|------------------|---|--|--|--|
| | | | |  GOUGH PLASTICS Custom Rotational Moulders | Gough Industries Pty. Ltd. 833 Ingham Road Bohle, Townsville P.O. Box 1258, Aitkenvale, Qld. 4814. Telephone 07 47747606 Facsimile 07 47747608 A.C.N. 010 028 547 | | Signature AGE | Date 24-09-01 | PREFABRICATED AMENITIES BUILDING 'EASTBROOK' EB-2C2D | | | |
| | | | | | | | DRAWN DRN. CHK ENGINEER ENG. CHK SUBMITTED FOR APPR. Eng. APPROVAL | | | | | |
| No. | DATE | BY | DESCRIPTION | GOUGH | This drawing remains the property of Gough Industries Pty. Ltd. It is subject to Gough Industries Pty. Ltd.'s recall and must not be reproduced in part or whole or it's contents divulged to third parties without prior written approval from Gough Industries Pty Limited. | | | | | | | |
| REVISION | | | | APPROV. | | | | | | | | |